



PLEASE READ THIS SERVICE BOOKLET CAREFULLY BEFORE OPERATING
YOUR MACHINE



12HP (MODEL 0913)

WARRANTY & SERVICE BOOK

N.B Please bring this service book in when warranty work is required.

TO OPERATE

BEFORE STARTING: See Engine Maintenance/Instruction Sheet.

DISENGAGING MOWING ATTACHMENT: The Disengaging lever is situated on the right hand side by the steering column. Before starting, disengage mowing attachment by pulling lever fully to the operator. For safety it is advisable at all times, other than when mowing, that the mowing attachment be kept in the disengaged position.

TO DRIVE FORWARD/REVERSE: Power is regulated by the throttle. Set throttle control to desired engine power. Press down on the forward section of the clutch pedal for forward movement, on the rear of the clutch pedal for reverse. The amount of pressure can be used to control the ground speed, especially in heavier conditions.

MANOEUVRING: Owing to the heel and toe type action of the drive pedal, it is possible to take the machine straight from forward to reverse and vice versa. This instant forward and reverse operation makes the machine very manoeuvrable and the sharpest turns can be negotiated easily and quickly.

TO BRAKE (WITH ENGINE RUNNING): The clutch may be used to stop the machine. If travelling forward push the pedal into reverse until machine stops, then bring the pedal back to neutral position or vice versa if travelling in reverse. Should a failure occur during operation use the emergency stop brake pedal situated on the left hand side and forward of where your foot would normally rest during normal operation.

TO BRAKE (WITH ENGINE STOPPED): Use the emergency brake only. Damage to clutch cone will occur if clutch pedal is used to brake the machine with the engine stationary.

PARKING AND TRANSPORTATION BRAKE: Depress the lever protruding out of the left hand mudguard downward and shift the lever to the left to engage the brake. Depress and shift to the right to release.

DO NOT ATTEMPT TO ENGAGE THE PARKING BRAKE UNLESS THE MACHINE IS STATIONARY.

CUTTING HEIGHT ADJUSTMENT: The height adjustment lever is located on the left hand side of the machine and may be altered to suit varying conditions, while the machine is in motion.

NOTE: When mowing slopes, leave machine in forward drive when going down hill. The low gearing will prevent it from picking up excessive speed. If very steep it may be necessary to throttle back slightly. Avoid holding machine on slopes using clutch with engine running and machine stationary as damage will occur to clutch plates.

MAINTENANCE INSTRUCTIONS

IT IS THE OWNERS RESPONSIBILITY TO ENSURE THAT ALL PERIODICAL CHECKS, NECESSARY ADJUSTMENTS AND SERVICES ARE CARRIED OUT.

STOP ENGINE - NEVER ATTEMPT ANY FORM OF SERVICE OR ADJUSTMENT WITH ENGINE RUNNING, REMOVE SPARK PLUG LEAD. MAKE SURE THE BLADES HAVE STOPPED ROTATING BEFORE CARRYING OUT ANY ADJUSTMENT.

1. **OIL CHANGING (ENGINE):** See Engine Maintenance/Instructions Sheet and carry out as per Engine Manufacturers Recommendation.
2. **LUBRICATION OF MACHINE:** Lubrication of machine should be carried out every 25 hours of operation or once a month, whichever falls due first. Service engine and lubricate machine more frequently under adverse conditions.
 - A. **OILING:** A few drops of oil should be placed at the following points:- steering column shaft (top and bottom), steering linkage, disengaging linkages, height adjustment mechanism, pivot bolt and linkages on clutch arm and clutch pedal.
 - B. **CHAIN:** Use only chain lube for lubrication the drive and steering chains.
 - C. **GREASE POINTS:** Grease nipples are located on the front wheel stub axle bushes.

UNDER NO CIRCUMSTANCES ALLOW GREASE OR OIL TO COME INTO CONTACT WITH THE CLUTCH CONE OR THE CLUTCH PLATE. SHOULD THIS OCCUR, CLEAN OFF IMMEDIATELY WITH PETROL WHILST SURFACES ARE COOL AND ALLOW TO DRY BEFORE USE.

3. **TO CHECK BLADES:** Stop engine. Remove spark plug lead. Lift windrower and height adjustment control to highest position. If necessary simply remove the blade bolt and nut using a suitable spanner and replace worn parts.
4. **CUTTER TO CLUTCH VEE BELT:** Tension is automatically adjusted by the belt tensioning springs. However, as the belt stretches it will be necessary to lower the rear of the cutter housing by loosening the rear lifting link nut to level the cutter housing and vice versa when a new belt is fitted. Check belt tension and level cutter at machine service period (every 25hrs or more frequently is required).
5. **ENGINE TO CLUTCH VEE BELT ADJUSTMENT:** Loosen the four engine mounting bolts. Move engine forward and adjust belt firmly. Do not over tension. While maintaining tension on the engine re-tighten bolts. Check belt tension at machine service period (25hrs) or more frequently under heavy mowing conditions.

6. DISENGAGING ADJUSTMENT: With mowing attachment in middle cut position, and the disengagement handle in the engaged position, the handle should be approximately parallel to footrest angle or rests on chassis stop. Due to normal wear in cutter to clutch vee belt, clearance will reduce. When clearance is reduced to zero, adjustment will be necessary to the disengagement adjuster and cutter head brake assembly. With the disengagement handle in the engaged position and mowing attachment in middle cut, remove 'R' pin and washer from disengagement adjuster, pull out adjuster from mounting pin. Hold handle parallel to footrest (or against stop). Screw adjuster in or out so that when installed mounting pin is positioned in the centre of the slot. Replace adjuster, washer and 'R' pin.

7. CUTTER BRAKE ASSEMBLY ADJUSTMENT: With disengagement handle in engaged position and mowing attachment in middle cut, normal clearance between cutter head pulley and cutter head brake pad is approximately 3mm (1/8"). To adjust clearance, remove 'R' pin from brake pull rod, adjust to give required clearance, replace brake pull rod and 'R' pin. Check operation after adjustment.

8. CLUTCH PLATE ADJUSTMENT: Periodically it will be found necessary to adjust the clutch plates as the clutch cone wears. Carry out this operation, with engine off and cutter in the engaged position, first loosen the lock nuts and set screws holding the plates in position. Position the clutch cone assembly into centre position. Slide the reverse (LH) clutch plate over to touch the clutch cone and tighten the set screws. Move the forward (RH) plate until approximately .8mm (1/32") from the clutch cone. Tighten the set screws and lock nuts.

9. DRIVE CHAIN: Adjustment is not necessary as there is an automatic adjuster fitted. Replace chain when chain has sagged enough to expose half the depth of the teeth on the bottom of the large sprocket. Failure to replace worn chain will cause premature wear of sprockets.

10. TO ADJUST STEERING CHAIN: Adjust chain by loosening the four bolts which hold the steering idler shaft mounting brackets (AM255) in position, slide forward to tension chain then retighten bolts.

11. TO REMOVE MOWING ATTACHMENT: Remove weight compensating spring. Remove 'R' pins from front pivot rod, rear lifting link and cutter brake adjusting rod. Remove rear lifting link from mowing attachment and cutter brake rod from chassis, raising mowing attachment to mid-height position, disengage mowing attachment, remove belt, remove pivot rod. Tilt machine toward left hand side and slide attachment from under machine. To refit, reverse the above.

12. TYRE PRESSURE: 140 Kpa (20.P.S.I.) approximately front and rear. Uneven pressure can give an uneven finish when mowing and may cause damage to tyres and/or tubes.

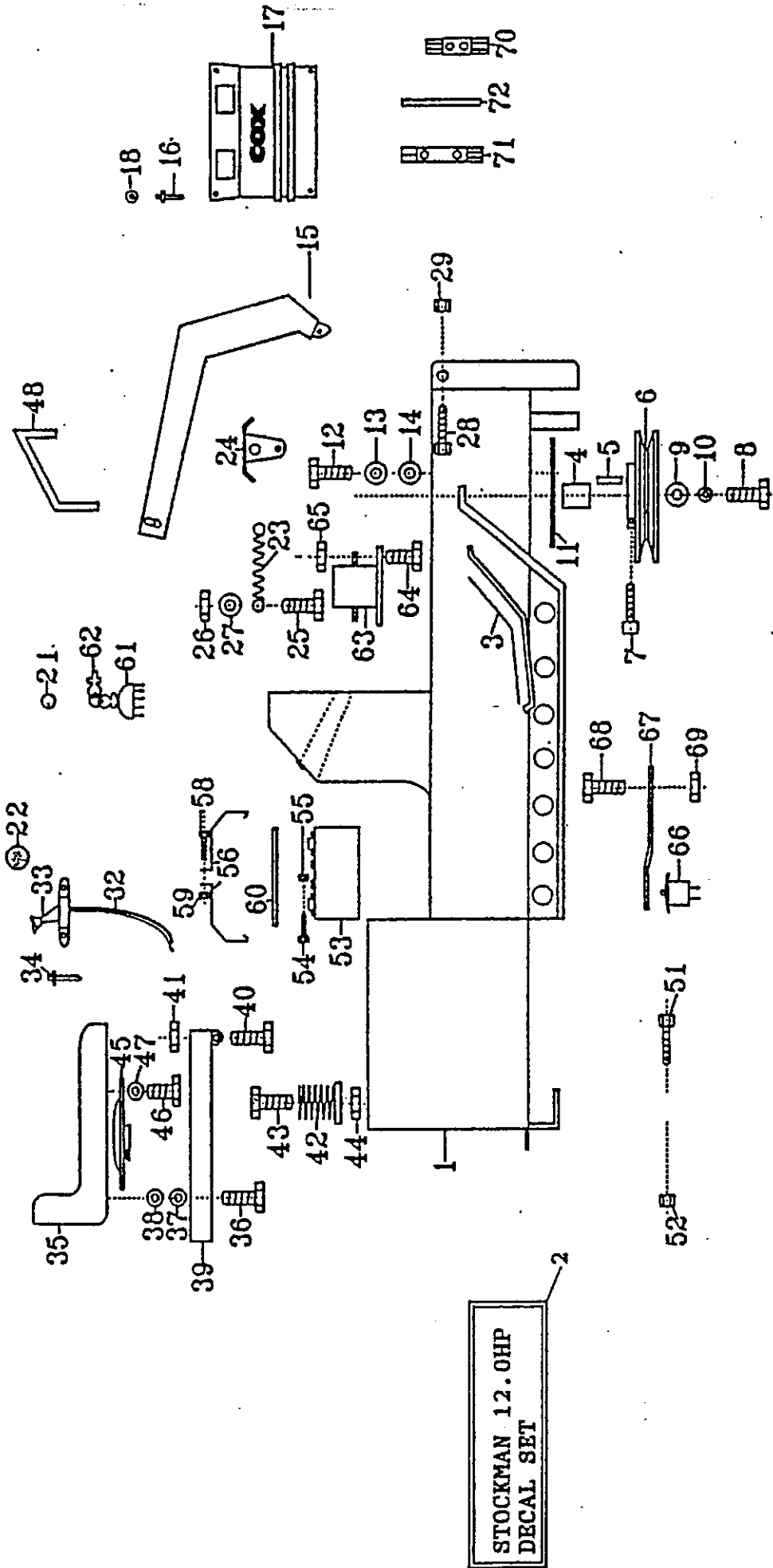
13. BATTERY MAINTENANCE: Maintain electrolyte fluid level just above plates by topping regularly with distilled water. When not in use, a battery discharges by as much as 1% a day, more when the climate is warm. To make up for this loss, a boosting charge should be given once a month. Disconnect battery terminals to charge, then allow to stand minimum 1/2hr before re-connecting (re-check electrolyte level). If a battery is not used for a period of more than three (3) months, the terminals should be disconnected and trickle charge at two (2) amps for two (2) hours once every three (3) months or before use.

14. SEAT ADJUSTMENT: Loosen four seat mounting bolts and slide seat into desired position in slots and re-tighten bolts.

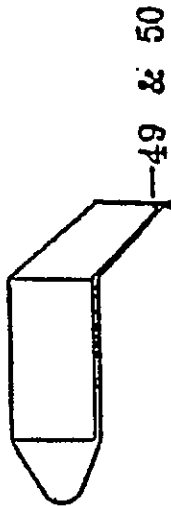
15. GENUINE SPARE PARTS: Always use Genuine Cox Factory Made Spare Parts. Use of non genuine COX spares will void your warranty.

16. SAFETY FIRST: The use of any mechanical appliance can cause injury if incorrect procedures are used. Please ensure that all family members of intended operators read thoroughly the COX CARE AND SAFETY TIP booklet enclosed with your operator instructions.

We are proud that you have purchased a Cox product and urge you to follow these instructions to obtain the maximum life from your machine. If in doubt check with your Supplier.



STOCKMAN 12.0HP
DECAL SET



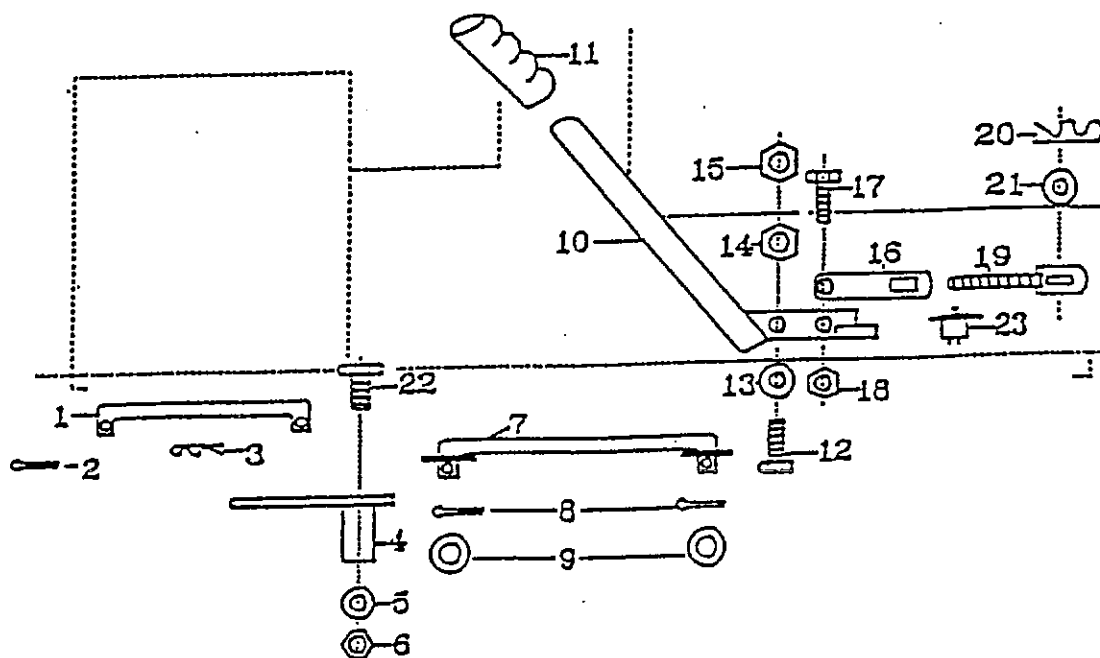
STOCKMAN 0913 GROUP 11: CHASSIS & COMPONENTS

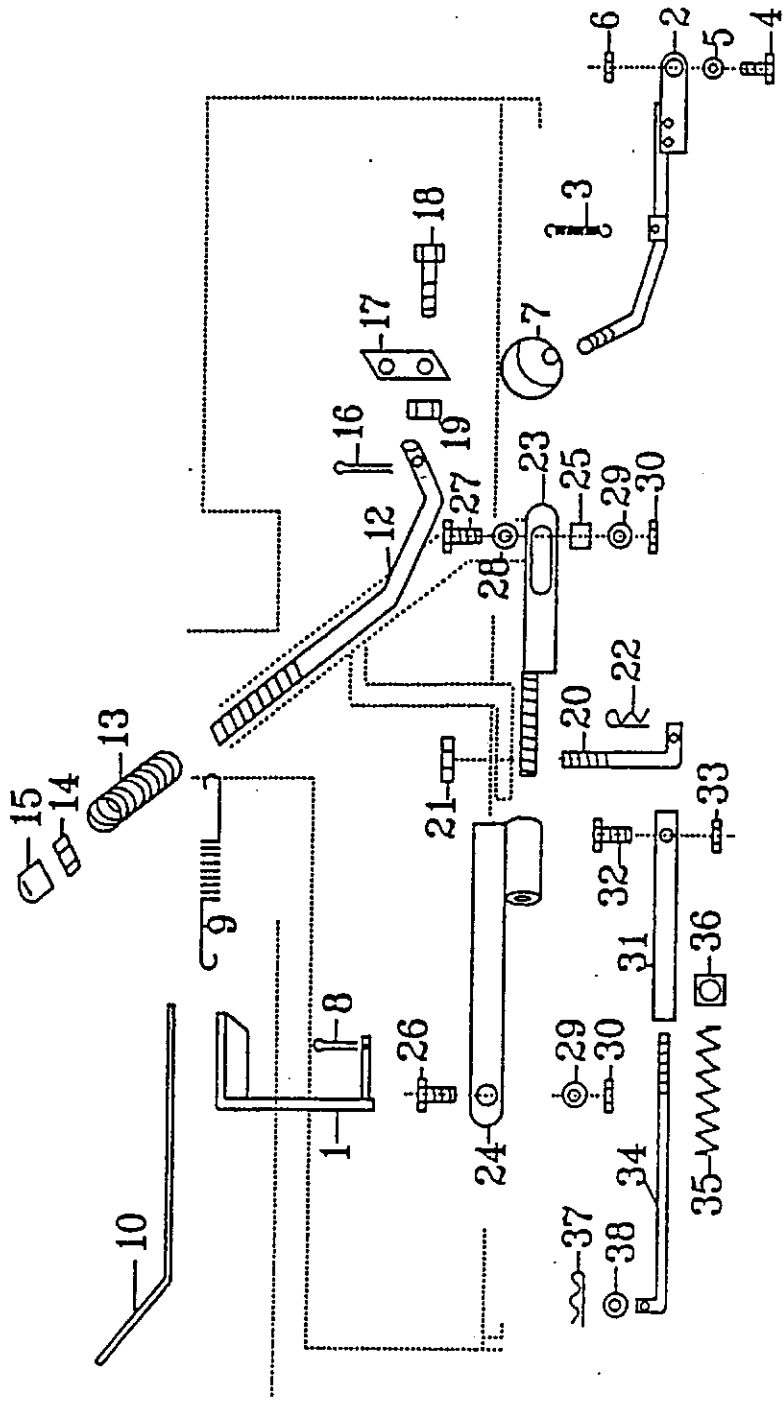
Ref. No.	Part No.	Description
1	09110J1R	Chassis
2	DEC09I312-0	Stockman 12HP Decal Set
3	NSM09	Non-Skid Material Set
4	AM233	Engine Pulley Spacer
5	AM175	Engine Pulley Key
6	AM234	Engine Pulley
7	GS0505W	Engine Pulley Key Screw
8	SH0720F	Engine Pulley Retaining Bolt
9	W072004	Engine Pulley Ret. Bolt Washer
10	W07S	Ret. Bolt Shakeproof Washer
11	AM078B0	Engine Mounting Bolt Plate (2)
12	B0524C	Engine Mounting Bolt (4)
13	WS050216	Engine Mtg. Bolt Spring Washer (4)
14	W051216	Engine Mounting Bolt Washer (4)
15	AM235H3R	Bonnet
16	PR0206	Bonnet Grill Rivet (4)
17	AM224F3NL	Bonnet Grill No Lights
18	W020516	Bonnet Grill Rivet Washer
21	091130	Dash Plug Small
22	091131	Dash Plug Large
23	AM180	Bonnet Spring (2)
24	AM181	Bonnet Strap (2)
25	SH0408C	Bonnet Spring Bolt (2)
26	N04CN	Bonnet Spring Nut (2)
27	W040816	Bonnet Spring Washer (2)
28	SH0412C	Bonnet Hinge Bolt (2)
29	N04CN	Bonnet Hinge Bolt Nut (2)
32	KIT51S1	Throttle Cable c/w Lever
33	AM088	Throttle Lever
34	PR0306	Throttle Lever Rivet (2)
35	AM261	Seat
36	B0512C	Seat Retaining Bolt (4)
37	W05S	Seat Ret. Bolt S/P Washer (4)
38	W052002	Seat Ret. Bolt Washer (4)
39	AM226R	Seat Mount
40	B0516C	Seat Mount Hinge Bolt (2)
41	N05CN	Hinge Bolt Nut (2)
42	AM177	Seat Spring (2)
43	B0612C	Seat Spring Ret. Bolt (2)
44	N06CN	Ret. Bolt Nut (2)
45	AM165	Seat Micro Switch
46	SR0408W	Seat Micro Attach Bolt (2)
47	W04S	Seat Micro Attach Washer (2)
48	AM179	Bonnet Trim
49	AM302R	Mudguard LH
50	AM303R	Mudguard RH
51	SH0408C	Mudguard Ret. Bolt (4)

52	N04CN	Mudguard Ret. Bolt Nut (4)
53	AM109	Battery
54	SH0412C	Terminal Bolt (2)
55	N04C	Terminal Bolt Nut (2)
56	AM300	Battery Clamp (2)
58	SR0420C	Battery Clamp Screw
59	N04C	Clamp Screw Nut
60	AM098M8	Battery Cover
61	AM014	Ignition Switch
62	AM015	Ignition Switch Key (2)
63	AM159	Solenoid
64	SH0408C	Solenoid Mounting Bolt (2)
65	N04CN	Solenoid Mounting Bolt Nut (2)
66	AM092	Micro Switch
67	AM100R2	Foot Micro Spring Plate
68	SH0408C	Spring Plate Bolt
69	N04CN	Spring Plate Bolt Nut
70	AM005G0	Spark Plug Spanner
71	AM006C1	Tube Spanner
72	AM007	Tommy Bar

STOCKMAN 0913 GROUP 12: CHASSIS & COMPONENTS

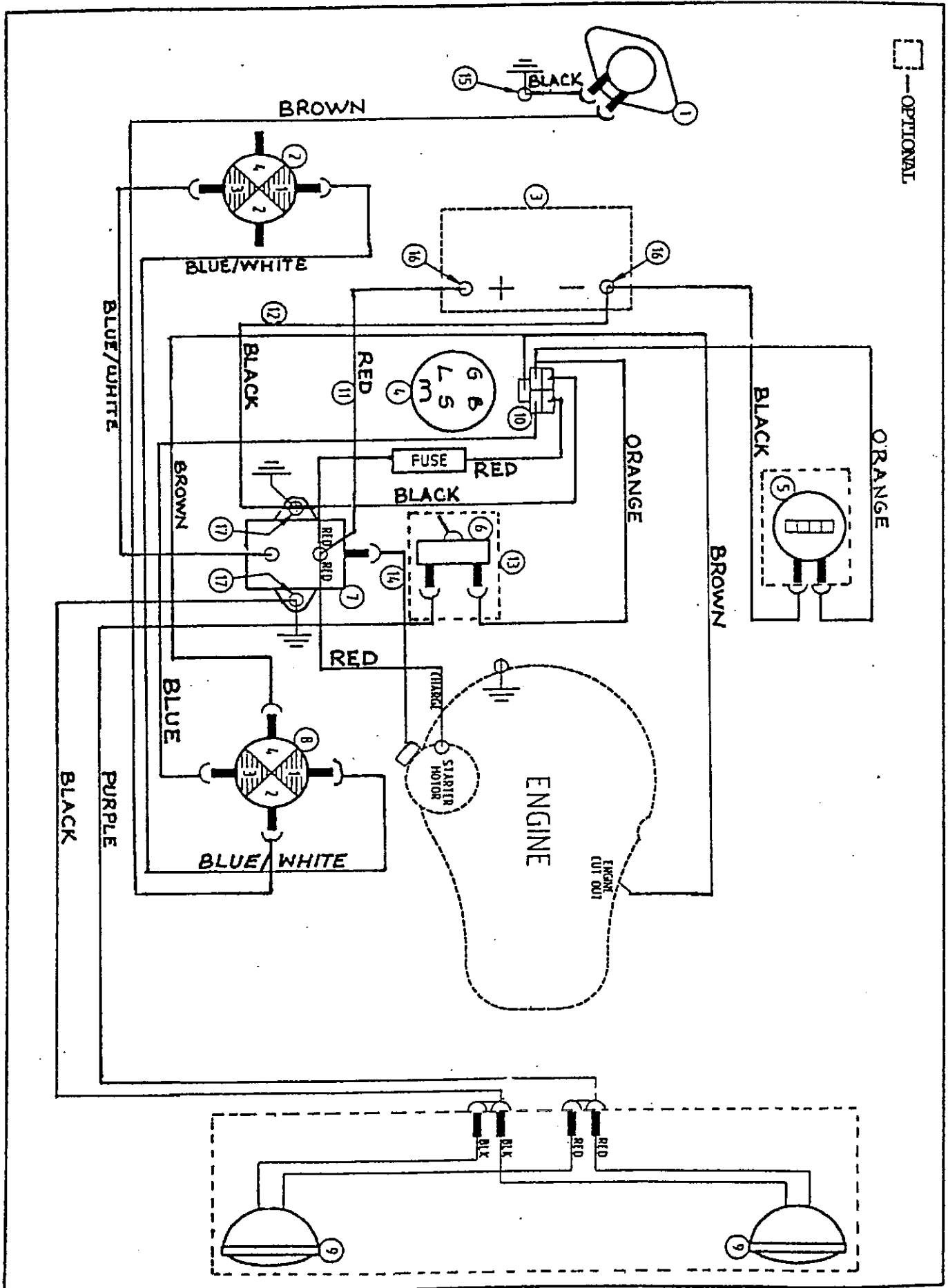
Ref. No.	Part No.	Description
1	AM238	Clutch Rod Short
2	CP3-220	Clutch Rod Short Split Pin
3	RP01	Clutch Rod Short 'R' Pin
4	AM182B0	Clutch Rod Short Pivot Plate
5	W061216	Clutch Rod Pivot Plate Washer
6	N06CN	Clutch Rod Pivot Plate Nut
7	091202F3	Clutch Rod Long
8	CP3-220	Clutch Rod Long Split Pin (2)
9	W071416	Clutch Rod Long Washer (2)
10	AM239H0	Disengaging Handle
11	AM009	Handle Grip
12	B0625C	Disengaging Handle Pivot Bolt
13	W061214	Pivot Bolt Washer (2)
14	N06C	Disengaging Handle Pivot Bolt Nut
15	N06CN	Pivot Bolt Locknut
16	AM240	Disengaging Adjuster Bushed
17	B0512C	Disengaging Adjuster Bolt
18	N05C	Disengaging Adjuster Bolt Nut
19	AM241	Disengaging Adjuster Threaded
20	RP01	Disengaging Adjuster 'R' Pin
21	W051216	Disengaging Adjuster Washer (2)
22	B0636C	Clutch Pivot Plate Bolt
23	AM092	Disengaging Micro Switch





STOCKMAN 0913 GROUP 13: LEFT HAND SIDE OF CHASSIS

Ref. No.	Part No.	Description
1	AM285	Brake Pedal
2	AM284Q2	Hand Park Brake
3	AM288	Hand Brake Spring
4	B0624C	Hand Park Brake Bolt
5	W061216	Hand Park Brake Washer
6	N06CN	Hand Park Brake Nut
7	AM290	Hand Brake Knob
8	CP3-220	Brake Pedal Split Pin
9	AM183	Brake Pedal Spring
10	NSM25	Non Skid Material (Complete Set)
12	AM143M9	Height Adjustment Pawl Push Rod
13	AM012	Height Adjustment Pawl Push Rod Spring
14	N04C	Height Adjustment Pawl Push Rod Lock Nut
15	AM013Q2	Height Adjustment Pawl Push Rod Button
16	CP2-512	Height Adjustment Pawl Push Rod Split Pin
17	AM011	Height Adjustment Pawl
18	B0516C	Height Adjustment Pawl Pivot Bolt
19	N05CN	Height Adjustment Pawl Pivot Bolt Nut
20	AM185B0	Cutter Housing Lifting Link
21	N06CN	Cutter Lifting Link Nut
22	RP02	Cutter Lifting Link 'R' Pin
23	AM267	Front to Rear Connecting Rod Threaded
24	AM268	Front to Rear Connecting Rod Bushed
25	AM249	Connecting Rod Bush
26	B0616C	Front to Rear Connecting Rod Bolt Front
27	B0620C	Front to Rear Connecting Rod Bolt Rear
28	W0620HD	Connecting Rod Rear Bolt Washer
29	W061216	Connecting Rod Bolt Washer (2)
30	N06CN	Connecting Rod Bolt Nut (2)
31	AM034H0	Cutter Brake Adjusting Bracket
32	B0512C	Cutter Brake Adjusting Bracket Bolt
33	N05CN	Cutter Brake Adjusting Bracket Bolt Nut
34	091310	Cutter Brake Adjusting Rod
35	AM035	Cutter Brake Spring
36	NS05C	Cutter Brake Adjusting Rod Nut
37	RP01	Cutter Brake Adjusting Rod 'R' Pin
38	W051216	Cutter Brake Adjusting Rod Washer

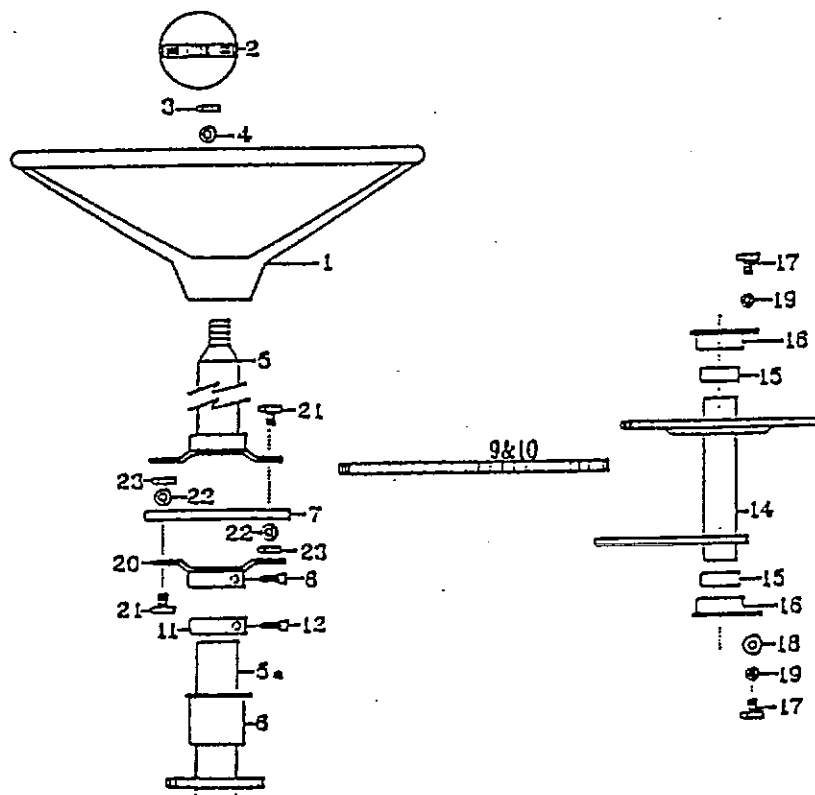


STOCKMAN 0913 GROUP 14: ELECTRICAL

Ref. No.	Part No.	Description
1	AM165	Seat Micro
2	AM092	Foot Micro
3	AM109	Battery
4	AM014	Ignition Switch
	AM015	Ignition Key (2)
5	AM211	Hourmeter (OPTIONAL)
	AM247	Hourmeter Lead (OPTIONAL)
6	AM229	Light Switch (OPTIONAL)
7	AM159	Solenoid
8	AM092	Disengaging Micro
9	AM288	Lamps (2) (OPTIONAL)
10	AM244N1	Wiring Loom
11	AM064R2	Battery to Solenoid (Red)
12	AM287	Battery to Earth (Black)
	AM104	Fuse
	AM160	Fuse Holder
	AM096	Loom Clamp (2)
	PR0308	Loom Clamp Pop Rivet(2)
	W030816	Pop Rivet Washer (2)
	SH0408C	Earth Lead Bolt (2)
	N04CN	Earth Lead Bolt Nut (2)
13	AM287	Chassis to Engine (Black)
14	AM064R2	Solenoid to Starter Motor (Red)

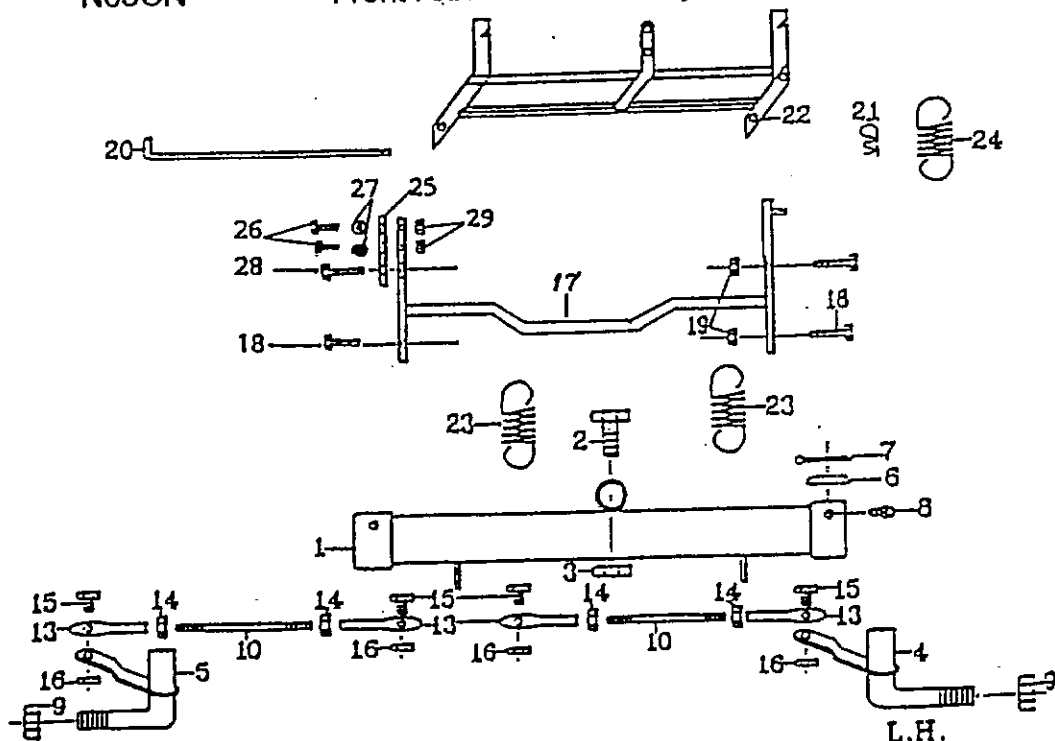
STOCKMAN 09I3 GROUP 15: STEERING COMPONENTS

Ref. No.	Part No.	Description
1	KIT37	Steering Wheel Incl. Emblem
	AM167M8	Steering Wheel
2	AM225	Steering Wheel Emblem
3	N06CN	Steering Wheel Nut
4	W061216	Steering Wheel Washer
5	AM250	Steering Shaft Upper
5a	AM251	Steering Shaft Lower
6	AM017C1	Steering Shaft Bush (3)
7	AM253	Steering Shaft Universal
8	SS0408W	Steering Shaft Flange Set Screw
9	AM018R	Chain Incl. Link
10	AM019R	Connecting Link
11	AM066	Steering Shaft Lock Collar
12	SS0408W	Lock Collar Set Screw
14	AM254	Steering Idler Shaft
15	AM215	Steering Idler Shaft Mtg Bracket Bush (2)
16	AM255	Steering Idler Shaft Mtg Bracket (2)
17	B0512C	Steering Idler Shaft Mtg Bracket Bolt (4)
18	W051216	Steering Idler Shaft Mtg Bracket Washer (2)
19	W05S	Idler Shaft Mtg Bracket S/P Washer (4)
20	AM252	Steering Shaft Flange
21	SH0416C	Flange Mounting Bolt (4)
22	W041216	Flange Mounting Bolt Washer (4)
23	N04CN	Flange Mounting Bolt Nut (4)



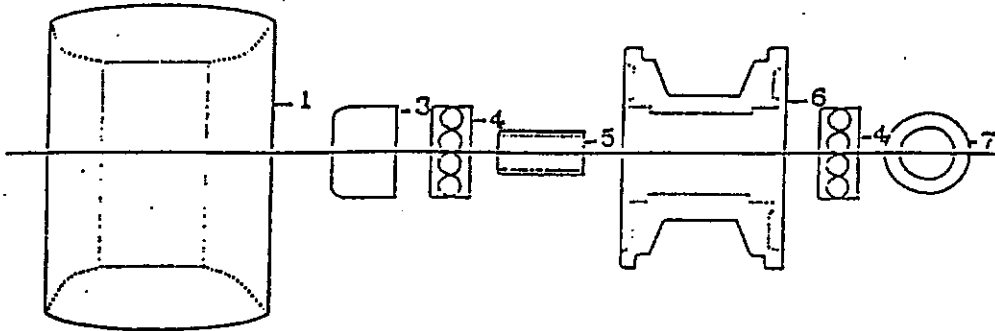
STOCKMAN 0913 GROUP 16: FRONT AXLE COMPONENTS

Ref. No.	Part No.	Description
1	AM190R	Front Axle Beam
2	B1236W	Front Axle Pivot Bolt
3	N12CN	Front Axle Pivot Bolt Nut
4	AM067	Stub Axle LH
5	AM068	Stub Axle RH
6	AM069	Stub Axle Dust Cap (2)
7	CP3-225	Stub Axle Split Pin (2)
8	GNTF3	Grease Nipple (2)
9	NT20FM	Front Wheel Nut (2)
10	AM256	Tie Rod (2)
13	AM020	Tie Rod End (4)
14	N06F	Tie Rod End Lock Nut (4)
15	B0620C	Tie Rod End Bolt (4)
16	N06CN	Tie Rod End Bolt Nut (4)
17	AM192G3	Front Axle Connecting Link
18	B0616C	Connecting Link Bolt (3)
19	N06CN	Connecting Link Bolt Nut (4)
20	AM039	Cutter Housing Pivot Rod
21	RP02	Cutter Housing Pivot Rod 'R' Pin
22	KIT62R	Cutter Housing Conn. Link Incl Bushes
		Red
	AM230	Cutter Housing Connecting Link Bushes (2)
23	AM040	Cutter Belt Tension Spring (2)
24	AM145	Weight Compensating Spring
25	AM304	Front Axle Conn Link Adjuster
26	B0516C	Front Axle Conn Link Adjuster Bolt (2)
27	W051216	Front Axle Conn Link Adjuster Washer (2)
28	B0620C	Front Axle Conn Link Adjuster Pivot Bolt
29	N05CN	Front Axle Conn Link Adjuster Nut (2)



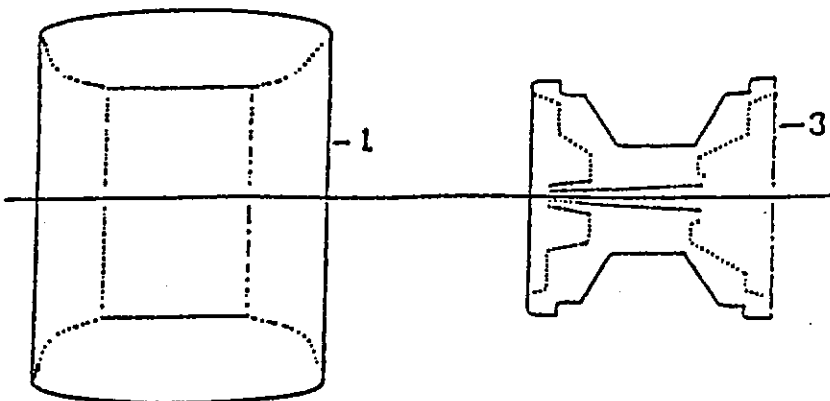
STOCKMAN 09I3 GROUP 17: FRONT WHEEL COMPONENTS

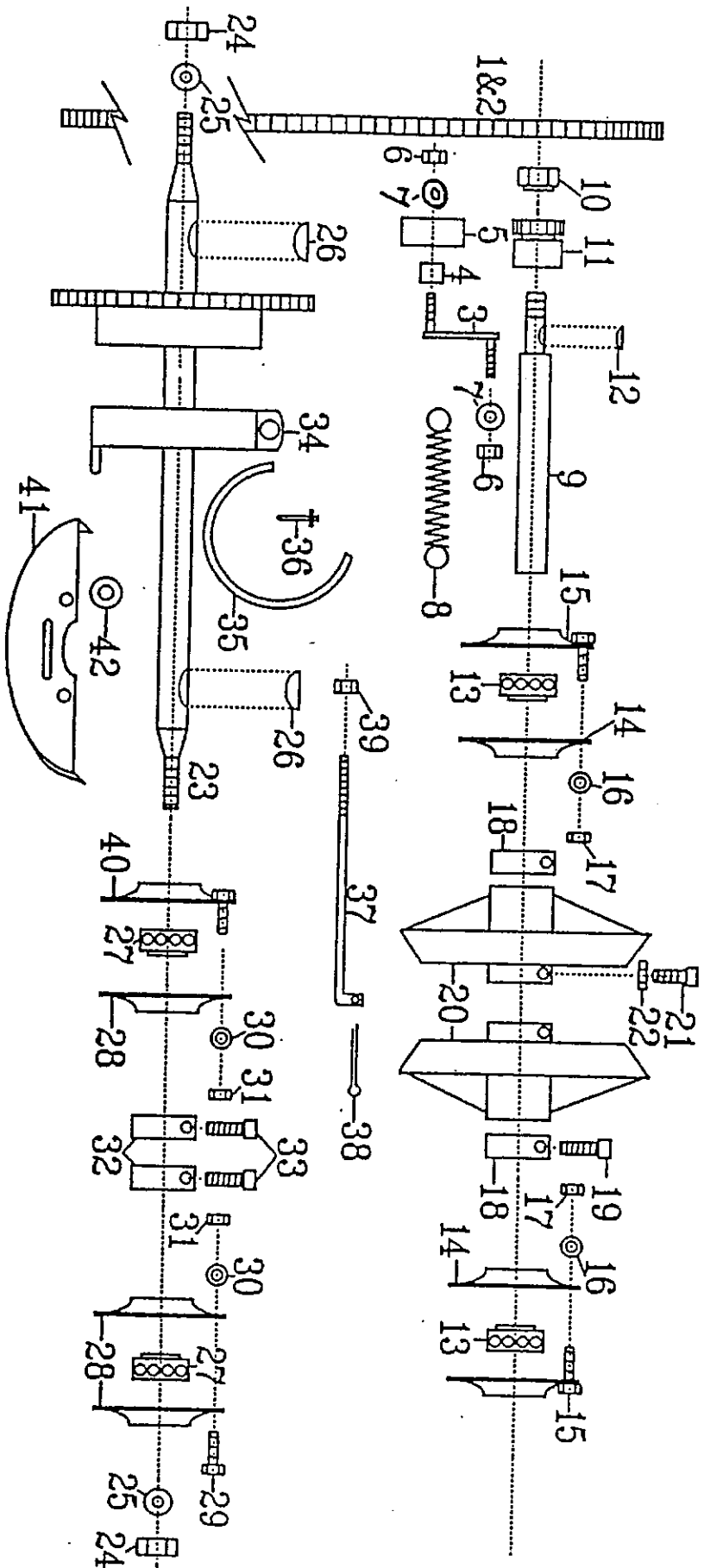
Ref. No.	Part No.	Description
1	TY500x6	Front Wheel Tyre (2)
2	TU500X6	Front Wheel Tube (2)
3	AM070	Front Wheel Hub Cap (2)
4	BB204212	Bearing (4)
5	AM021	Bearing Spacer (2)
6	AM193M9	Wheel Hub (2)
7	W203902	Inner Dust Washer (2)



STOCKMAN 09I3 GROUP 18: REAR WHEEL COMPONENTS

Ref. No.	Part No.	Description
1	TY650x8	Rear Wheel Tyre (2)
2	TU650X8	Rear Wheel Tube (2)
3	AM194	Wheel Hub (2)





STOCKMAN 0913 GROUP 19: DRIVE COMPONENTS

Ref. No.	Part No.	Description
1	AM018R	Drive Chain Incl Link
2	AM019R	Connecting Link
3	AM245	Chain Tensioner (2)
4	AM231	Spacer (4)
5	BB256217	Bearing (2)
6	N06CN	Ret. Nut (4)
7	W061216	Ret. Nut Washer (6)
8	AM180	Chain Tensioning Spring
9	AM071	Intershaft
10	AM022	Intershaft Nut
11	KIT30	Intershaft Sprocket & Key
12	K03	Intershaft Sprocket Key
13	BB25SA	Intershaft Bearing (2)
14	AM024	Intershaft Bearing Flange (2)
15	AM286	Intershaft Bearing Flange (2)
17	N06CN	Bearing Flange Bolt Nut (6)
18	AM025	Intershaft Lock Collar (2)
19	SS0506W	Lock Collar Set Screw (2)
20	AM197G1	Clutch Plate (2)
21	SS0620W	Clutch Plate Set Screw (4)
22	N06C	Clutch Plate Set Screw Lock Nut (4)
23	AM198	Rear Axle
	091905E	Rear Axle Extended
24	N10F	Rear Axle Nut (2)
25	W102016	Rear Axle Washer (2)
26	K18	Rear Axle Key (2)
27	BB25SA	Rear Axle Bearing (2)
28	AM024	Rear Axle Bearing Flange (3)
29	B0616C	Bearing Flange Bolt (3)
30	W061216	Bearing Flange Bolt Washer (3)
31	N06CN	Bearing Flange Bolt Nut (6)
32	AM025	Rear Axle Lock Collar (2)
33	SS0506W	Lock Collar Set Screw (2)
34	KIT16	Drum Brake Incl Lining
35	AM200	Brake Band Lining
36	PR0205	Brake Lining Rivet (4)
37	091908F3	Drum Brake Rod
38	CP3-220	Drum Brake Rod Split Pin
39	N05CN	Drum Brake Rod Nut
40	AM202	Rear Axle Bearing Flange LH
41	AM203B1	Chain Guard (Optional)
42	W061216	Chain Guard Washer (2) (Optional)
**	KIT68	Chain Adjuster Duel Bearing Kit

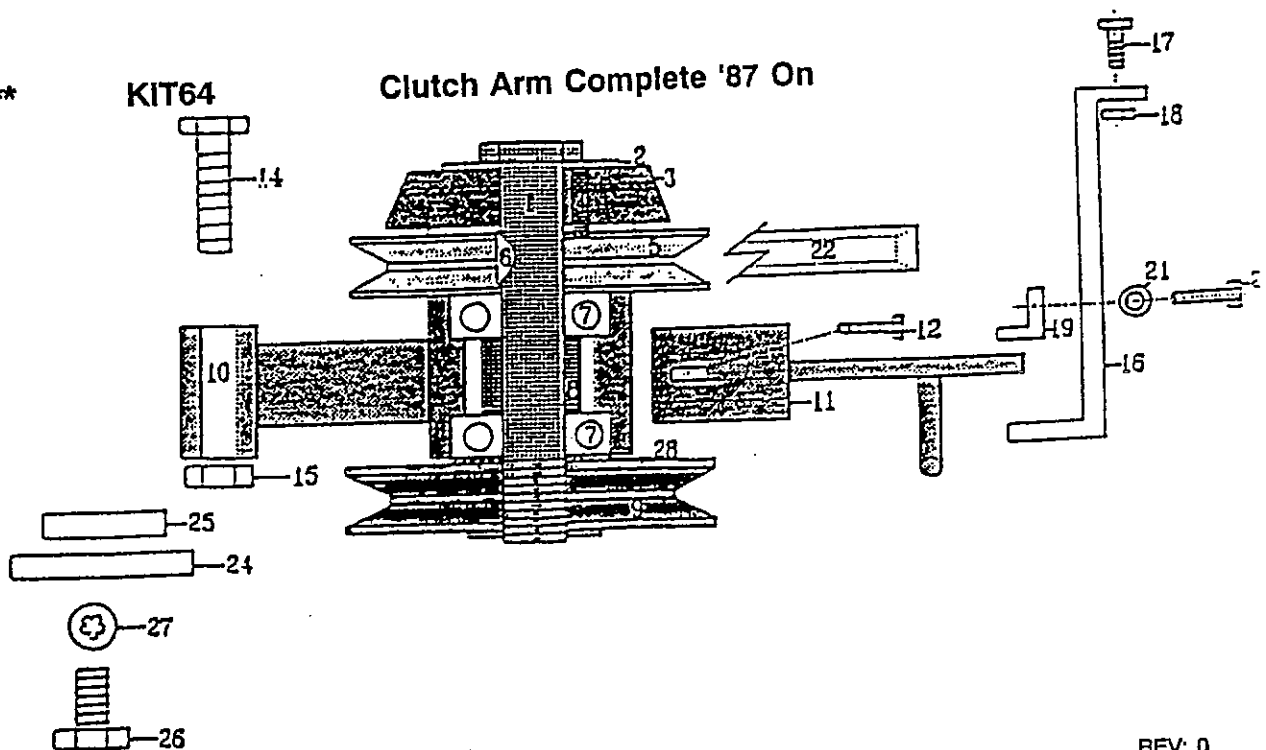
STOCKMAN 0913 GROUP 20: CLUTCH ARM & COMPONENTS

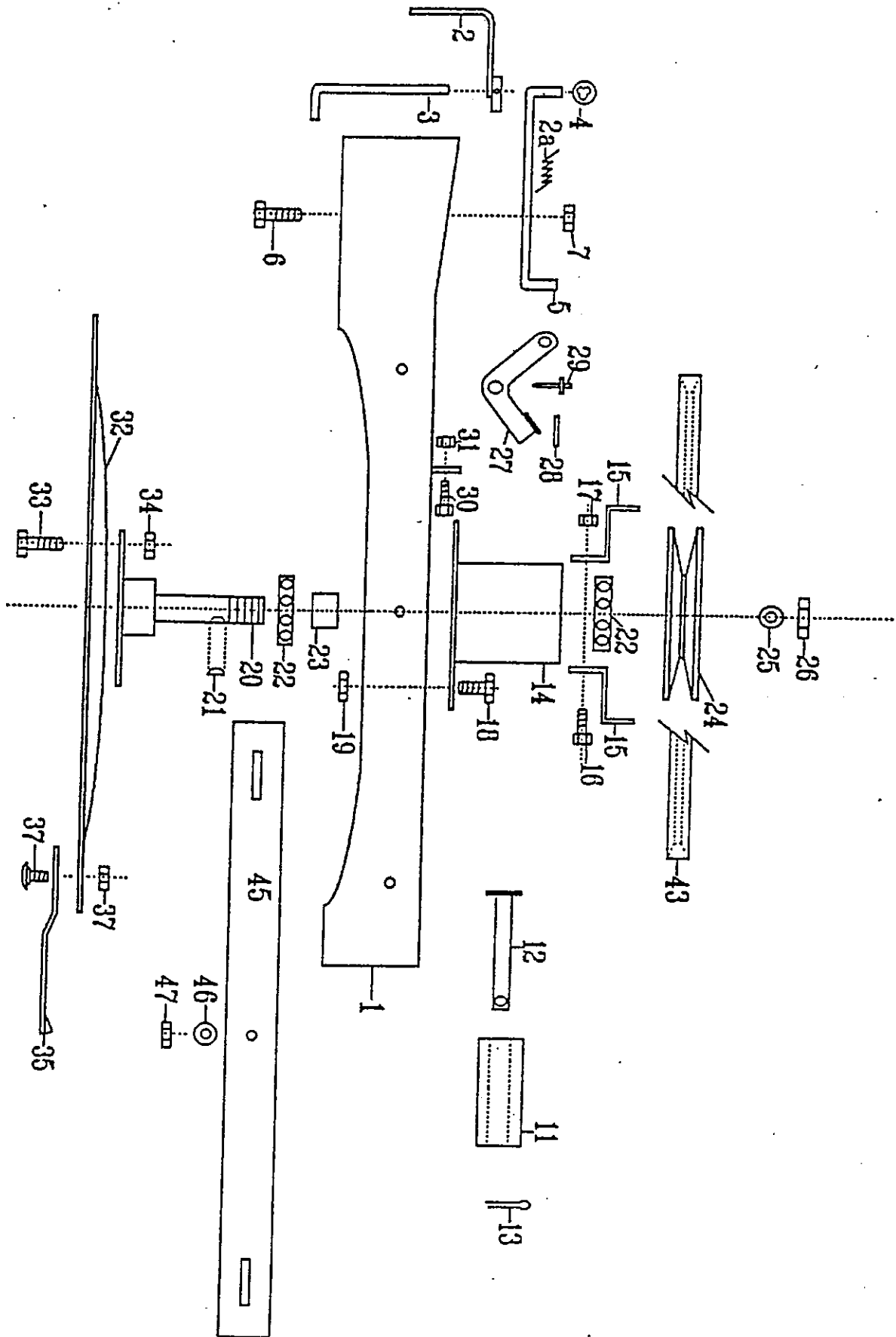
Ref. No.	Part No.	Description
1	AM204	Clutch Shaft Incl Nut
2	W204403	Clutch Cone Ret. Washer
3	CC20100F	Clutch Cone
4	AM026	Clutch Cone Pin
5	AM158	Clutch Pulley Upper
6	K09	Clutch Pulley Key
7	BB205215	Clutch Bearing (2)
8	AM072	Clutch Bearing Spacer
9	AM205	Clutch Pulley Lower
10	KIT26	Clutch Arm c/w Yoke
11	AM207	Clutch Arm Yoke USE KIT26
12	b0512c	Clutch Arm Yoke Ret. Bolt (2)
14	B052C	Clutch Arm Pivot Bolt
15	N06CN	Clutch Arm Pivot Bolt Nut
16	AM206	Clutch Arm Locating Bracket
17	SH0412C	Clutch Arm Locating Bracket Bolt (2)
18	N04CN	Clutch Arm Locating Bracket Bolt Nut (2)
19	AM246	Clutch Arm Bracket Wear Plate
20	B0512C	Clutch Arm Bracket Wear Plate Bolt (2)
21	W051216	Clutch Arm Brkt Wear Plate Washer (2)
	W05S	Wear Plate S/P Washer (2)
22	VB64	Belt - Engine to Clutch
24	AM208	Clutch Adjusting Plate
25	AM209	Clutch Adjusting Tapped Plate (2)
26	B0616C	Adjusting Plate Bolt (2)
27	W06S	Bolt Lock Washer (2)
28	W203902	Clutch Pulley Bearing Washer

**

KIT64

Clutch Arm Complete '87 On





STOCKMAN 0913 GROUP 21: 28" MOWING ATTACHMENT COMPONENTS

Ref. No.	Part No.	Description
1	KIT48	Cutter Housing c/w F/Cover
	AM230	Cutter Housing Bush (2)
2	AM259	Deflector
	AM272	Deflector Spring
3	AM273	Deflector Rod
4	AM274	Deflector Ratchet Plate
	W041216	Deflector Bracket Washer
5	AM052E1	Deflector Bracket
6	SH0412C	Deflector Bracket Bolt (2)
7	N04CN	Deflector Bracket Bolt Nut (2)
11	AM036D9	Cutter Housing Roller
12	AM037	Cutter Roller Shaft
13	CP3-225	Cutter Roller Shaft Split Pin
14	KIT08	Cutter Bearing Hsng c/w Belt Guides
15	AM073	Belt Guides (2)
16	B0416C	Belt Guide Bolt (2)
17	N04CN	Belt Guide Bolt Nut (2)
18	B0620C	Cutter Bearing Housing Bolt (4)
19	NF06CN	Cutter Bearing Housing Bolt Nut (4)
20	AM028	Cutter Shaft
21	K09	Cutter Shaft Key
22	BB205215	Cutter Shaft Bearing (2)
23	AM029	Bearing Spacer
24	AM030	Cutter Shaft Pulley
25	W204403	Pulley Ret. Washer
26	NT20FM	Pulley Ret. Nut
27	KIT15	Cutter Brake Incl. Pad
28	AM033	Cutter Brake Pad
29	PR0205	Brake Pad Pop Rivet (2)
30	B0520C	Cutter Brake Pivot Bolt
31	N05CN	Cutter Brake Pivot Bolt Nut
32	AM076H7	Cutter Disc
33	B0612C	Cutter Disc Ret. Bolt (4)
34	N06CN	Cutter Disc Ret. Bolt Nut (4)
35	MB150SHD	Cutter Blade - Stepped
	MB150AHD	Cutter Blade - Air Flow (optional)
37	KIT01D1	Blade Bolt & Nut Set
43	VB50	Belt - Cutter to Clutch. Suit 09 Series Machines
45	AM220	Cutter Front Guard
46	W051216	Cutter Guard Washer (3)
47	N05CN	Cutter Guard Ret. Nut (3)
***	KIT32	Blade, Bolt, Nut Set - Stepped
	KIT33	Blade, Bolt, Nut Set - Air Flow
	KIT35	Blade, Bolt, Nut Set - Flat
	KIT66	Deflector Kit

